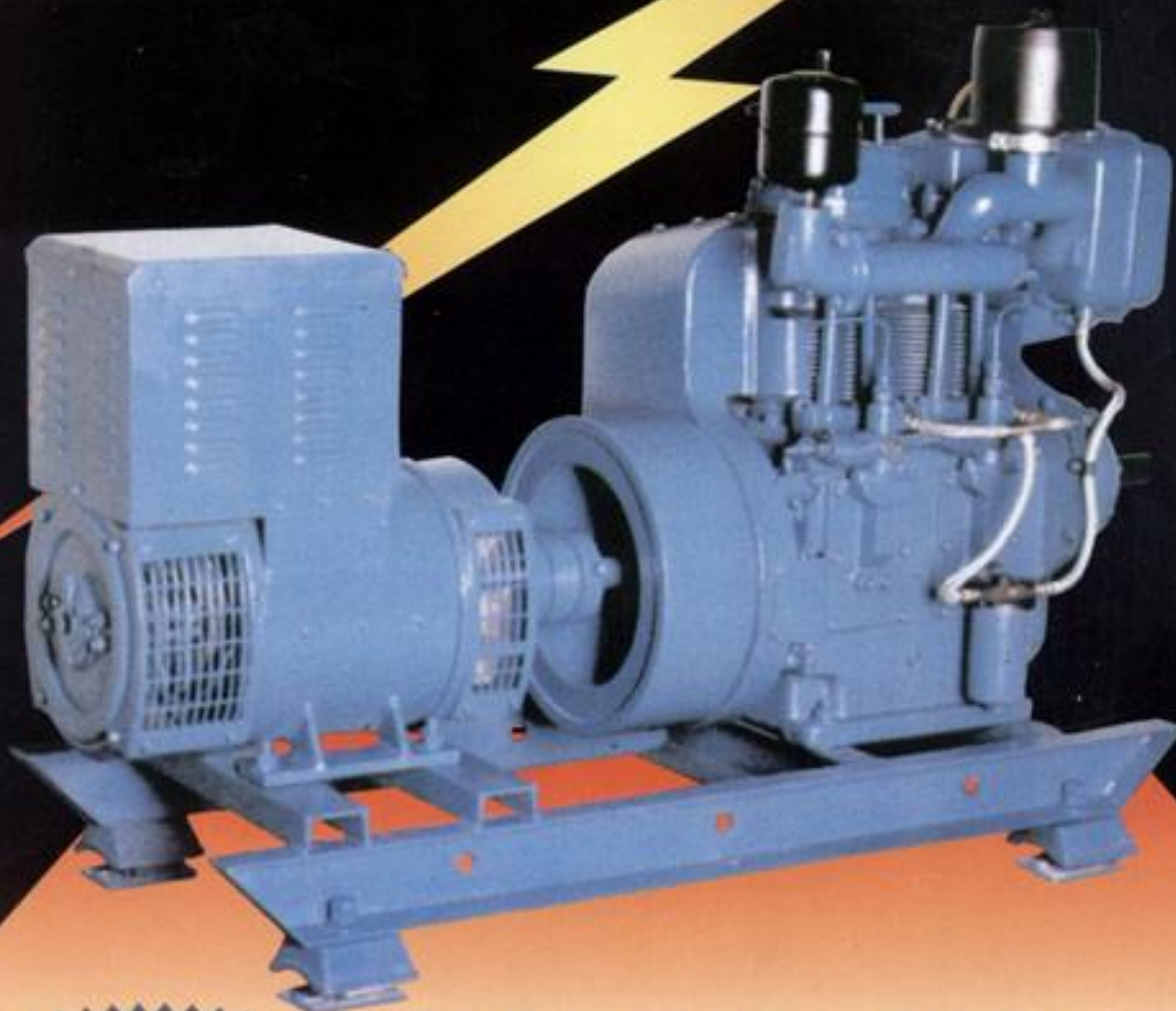




Diesel Generating Set

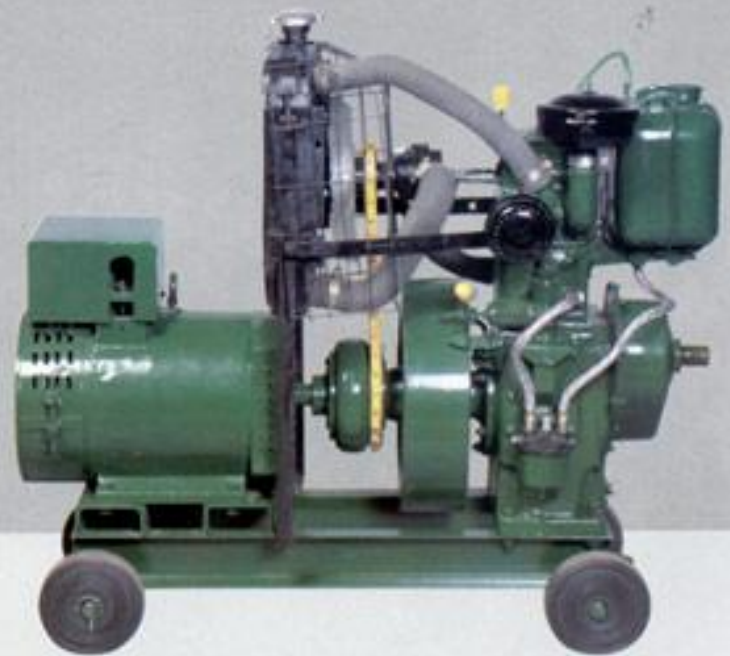


2.2 KVA TO 20 KVA
IN SINGLE PHASES / THREE PHASE
AIR COOLED & WATER COOLED
HIGH SPEED
DIESEL ENGINE

**the only alternate
to power**



Diesel Generating Set



TECHNICAL DATA

AIR COOLED DIESEL ENGINE GENERATING SET MOUNTED ON M.S. BASE PLATE SINGLE PHASE 1500 RPM 240 VOLTS, 50 Hz, UPF

SR.	KVA	AMPS	ENGINE		HP
			MODEL	TYPE	
1	2.2 / 2.5	10	PAL - 40	TRB	4
2	3 / 3.5	14	PA - 5	TRB	5
3	5	20.8	PA - 8	TRB / BB	8
4	6	25	PA - 10	TRB / BB	10
5	7.5	31.2	PA - 12	TRB / BB	12
6	10	41.6	PA - 16	BB GOP	16
7	12.5	52	PA - 20	BB GOP	20
8	15	62.5	PA - 25	BB GOP	25

AIR COOLED DIESEL ENGINE GENERATING SET MOUNTED ON M.S. BASE PLATE THREE PHASE 1500 RPM 415 VOLTS, 50 Hz, 0.8 UPF

1	5	7	PA - 8	TRB / BB	8
2	6	8	PA - 10	TRB / BB	10
3	7.5	10.5	PA - 12	TRB / BB	12
4	10	13.9	PA - 16	BB GOP	16
5	12.5	17.4	PA - 20	BB GOP	20
6	15	20.9	PA - 25	BB GOP	25

WATER COOLED DIESEL ENGINE GENERATING SET MOUNTED ON M.S. BASE PLATE SINGLE PHASE 1500 RPM 240 VOLTS, 50 Hz, UPF

SR.	KVA	AMPS	ENGINE		HP
			MODEL	TYPE	
1	2.2 / 2.5	10	PVL - 50	TRB	5
2	3 / 3.5	14	PVP - 5	TRB	5
3	5	20.8	PVP - 8	TRB / BB	8
4	6	25	PVP - 10	TRB / BB	10
5	7.5	31.5	PVP - 12	TRB / BB	12
6	10	41.6	PVP - 16	BB GOP	16
7	12.5	52	PVP - 20	BB GOP	20
8	15	62.5	PVP - 25	BB GOP	25

WATER COOLED DIESEL ENGINE GENERATING SET MOUNTED ON M.S. BASE PLATE THREE PHASE 1500 RPM 415 VOLTS, 50 Hz, 0.8 UPF

1	5	7	PVP - 8	TRB / BB	8
2	6	8	PVP - 10	TRB / BB	10
3	7.5	10.5	PVP - 12	TRB / BB	12
4	10	13.9	PVP - 16	BB GOP	16
5	12.5	17.4	PVP - 16	BB GOP	16
6	15	20.9	PVP - 20	BB GOP	20
7	20	27.8	PVP - 25	BB GOP	25



TECHNICAL DATA

**AIR COOLED DIESEL ENGINE GENERATING SET MOUNTED ON M.S. BASE PLATE
SINGLE PHASE 1800 RPM 120 VOLTS, 60 Hz, UPF**

SR.	KVA	AMPS	ENGINE		HP
			MODEL	TYPE	
1	2.2 / 2.5	20	PAL - 40	TRB	4
2	3 / 3.5	28	PA - 5	TRB	5
3	5	41.6	PA - 8	TRB / BB	8
4	6	50	PA - 10	TRB / BB	10
5	7.5	62.4	PA - 12	TRB / BB	12
6	10	83.2	PA - 16	BB GOP	16
7	12.5	104	PA - 20	BB GOP	20
8	15	125	PA - 25	BB GOP	25

**AIR COOLED DIESEL ENGINE GENERATING SET MOUNTED ON M.S. BASE PLATE
THREE PHASE 1800 RPM 210 VOLTS, 60 Hz, 0.8 PF**

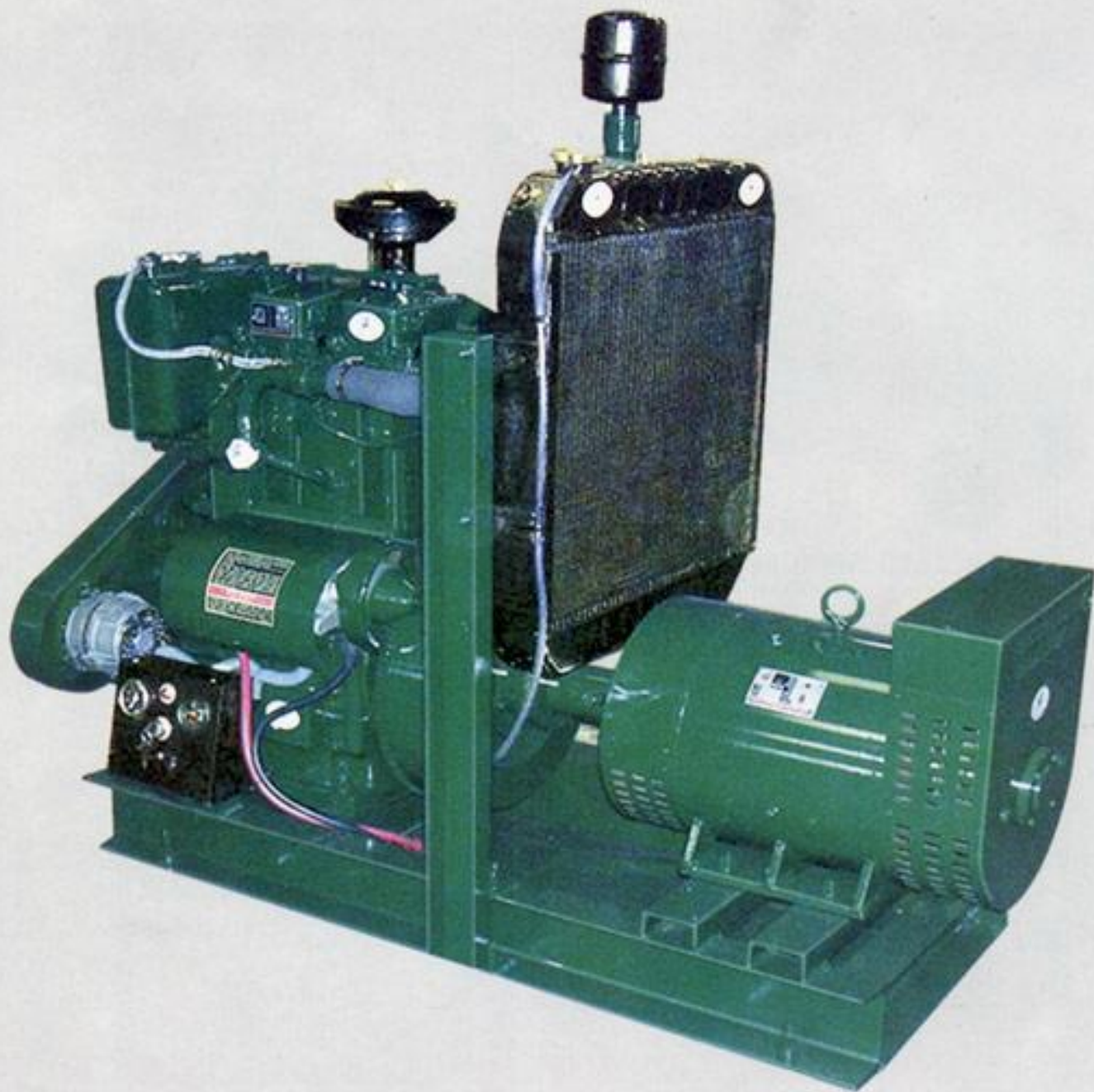
1	5	13.6	PA - 8	TRB / BB	8
2	6	16.5	PA - 10	TRB / BB	10
3	7.5	20.5	PA - 12	TRB / BB	12
4	10	27.4	PA - 16	BB GOP	16
5	12.5	34.3	PA - 20	BB GOP	20
6	15	41.3	PA - 25	BB GOP	25

**WATER COOLED DIESEL ENGINE GENERATING SET MOUNTED ON M.S. BASE PLATE
SINGLE PHASE 1800 RPM 120 VOLTS, 60 Hz, UPF**

SR.	KVA	AMPS	ENGINE		HP
			MODEL	TYPE	
1	2.2 / 2.5	20	PVL - 50	TRB	5
2	3 / 3.5	28	PVP - 5	TRB	5
3	5	41.6	PVP - 8	TRB / BB	8
4	6	50	PVP - 10	TRB / BB	10
5	7.5	62.4	PVP - 12	TRB / BB	12
6	10	83.2	PVP - 16	BB GOP	16
7	12.5	104	PVP - 20	BB GOP	20
8	15	125	PVP - 25	BB GOP	25

**WATER COOLED DIESEL ENGINE GENERATING SET MOUNTED ON M.S. BASE PLATE
THREE PHASE 1800 RPM 210 VOLTS, 60 Hz, 0.8 PF**

1	5	13.6	PVP - 8	TRB / BB	8
2	6	16.5	PVP - 10	TRB / BB	10
3	7.5	20.5	PVP - 12	TRB	12
4	10	27.4	PVP - 16	BB GOP	16
5	12.5	34.3	PVP - 16	BB GOP	16
6	15	41.3	PVP - 20	BB GOP	20
7	20	54.9	PVP - 25	BB GOP	25



Manufacturers & Exporters :

PREM ENGINEERING PVT. LTD.

HRISHI EXPORTS PVT. LTD.

334, G.I.D.C. AJI INDUSTRIAL, ESTATE, PHASE II,
Rajkot 360 002 (India)

PHONE : +91-281-2387164, 2387295, 2387895

FAX : +91-281-2389545, 2227573

EMAIL : info@hrishiexports.com

WEB : www.hrishiexports.com

As Continuous Improvements are contemplated the illustration and description & specifications not binding

વિશિષ્ટ ગુણો અને કારણો વચ્ચેના વાદ-વિવાદો થઈ શકે છે ।